

RIFF JTAG Error codes and troubleshooting

Error code 0x39 (0x3901)

2.7. Error code 0x39

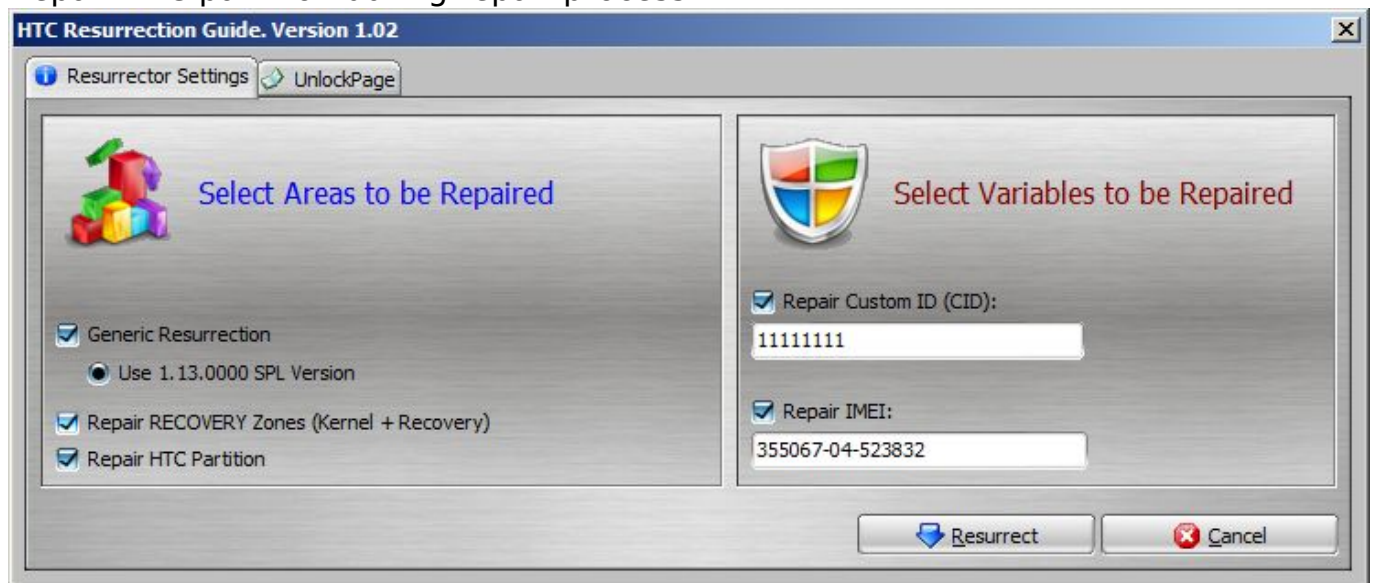
Returned by the DCC Loader when it was executing an extended command and that command failed. Extended command's failure status is operation specific and is not relevant to communication problems.

Explanation:

Mostly happens with HTC phones when HTC partition is erased.

Solution:

Repair HTC partition during repair process:



Unique solution ID: #1034

Author: Legija

Last update: 2012-04-28 13:31