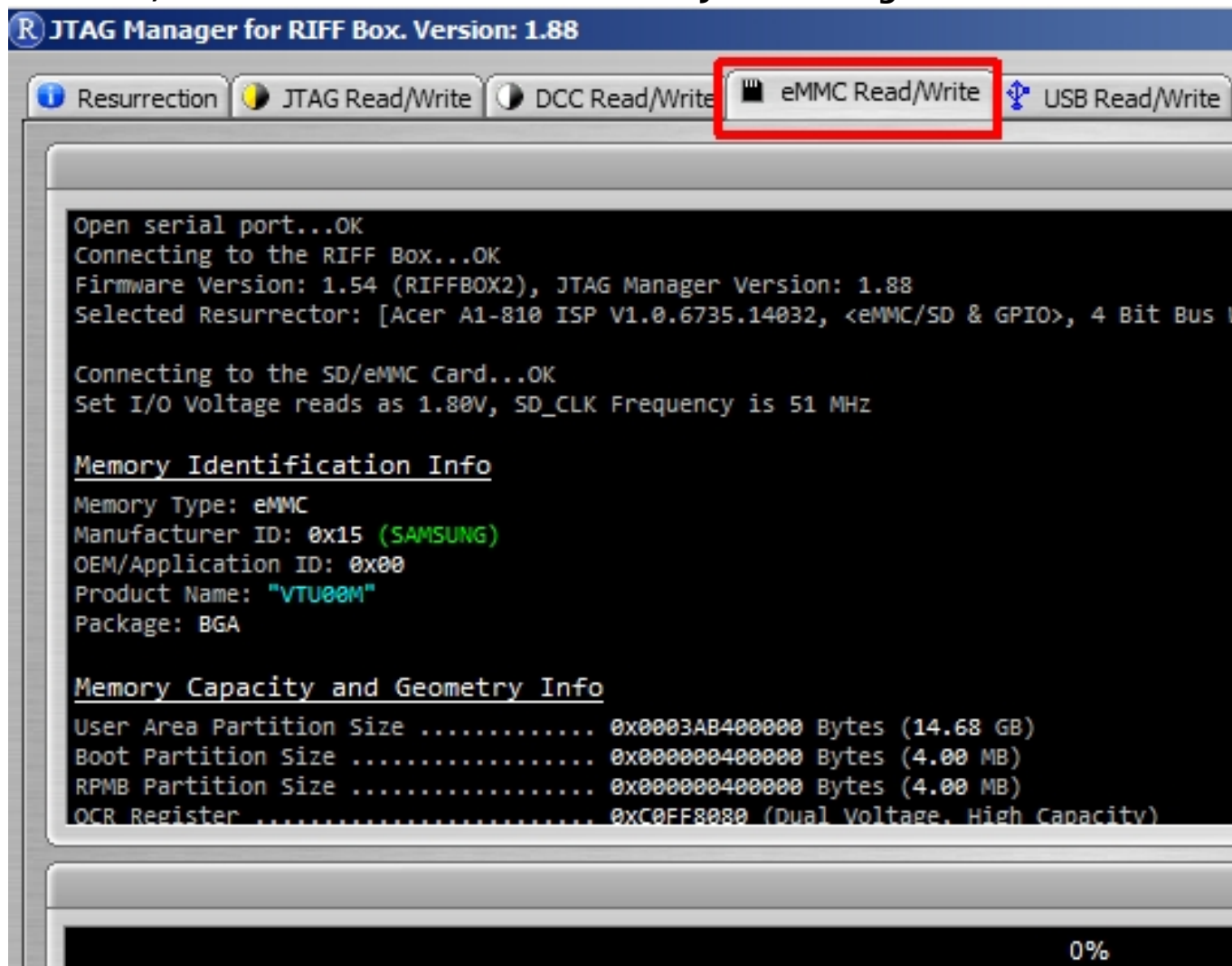


# eMMC Read/Write tab

## How to read eMMC backup using RIFF Box JTAG Manager software

For start, click "eMMC Read/Write" tab on JTAG Manager software:



Click "Check eMMC/SD Card", software will read information from chip:

# eMMC Read/Write tab

```
R eMMC Memory Information

Memory Identification Info
Memory Type: eMMC
Manufacturer ID: 0x15 (SAMSUNG)
OEM/Application ID: 0x00
Product Name: "VTU00M"
Package: BGA

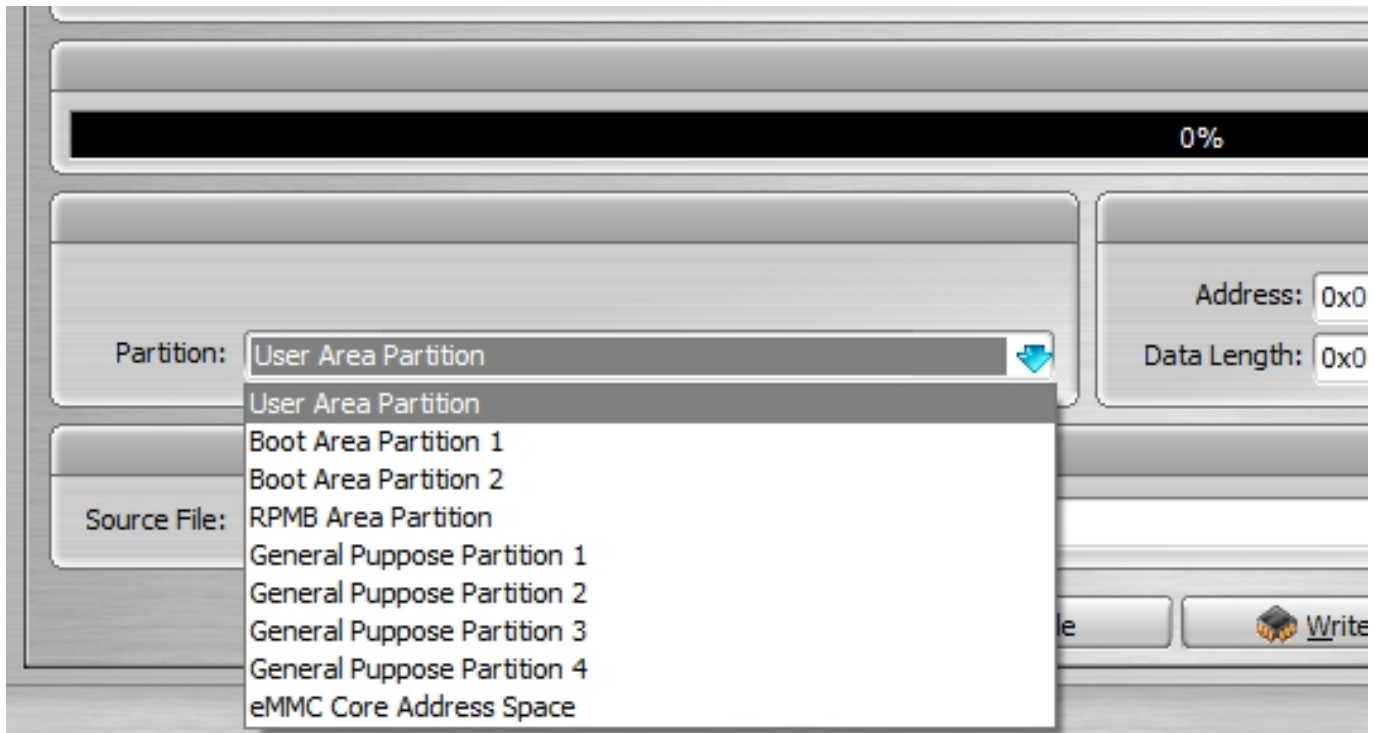
Memory Capacity and Geometry Info
User Area Partition Size ..... 0x0003AB400000 Bytes (14.68 GB)
Boot Partition Size ..... 0x000000400000 Bytes (4.00 MB)
RPMB Partition Size ..... 0x000000400000 Bytes (4.00 MB)
OCR Register ..... 0xC0FF8080 (Dual Voltage, High Capacity)
CID Register ..... 15010056545530304DFC3D39868641FB
CSD Register ..... D02701320F5903FFF6DBFFFF8E40406D
Write Protection Bits ..... NONE
ExtCSD Register Fields ..... [177] = 0x01, [179] = 0x48, [162] = 0x00
Boot Configuration ..... Boot from Boot Partition 1 (Bus Width = 4 Bits)
Max Speed Supported ..... 52MHz
Chip Revision ..... 15.12
Multimedia Card Revision ..... 1.6 (eMMC v4.5, v4.51)
Serial Number ..... 0x3D398686
Memory Manufacturing Date ..... May, 2014

Memory Health Information
Device life time reflected by Reserved Blocks - PERFECT
Estimated wear out of MLC Memory - Wear out: 0%, Lifetime remaining: 100%
Estimated wear out of SLC Memory - Wear out: 0%, Lifetime remaining: 100%
```

**To read data from chip, we need input parameters:**

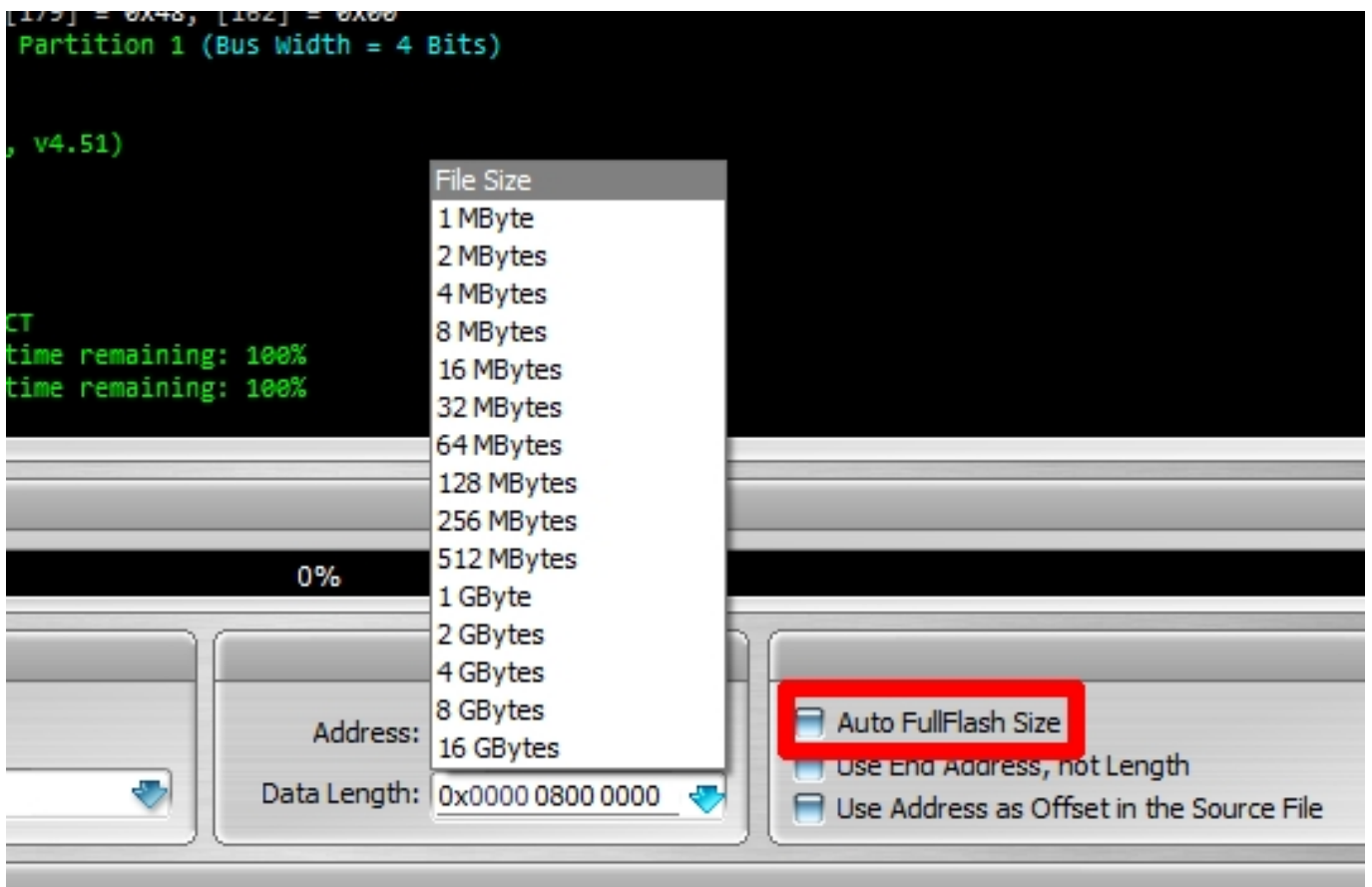
- Physical partition:

# eMMC Read/Write tab



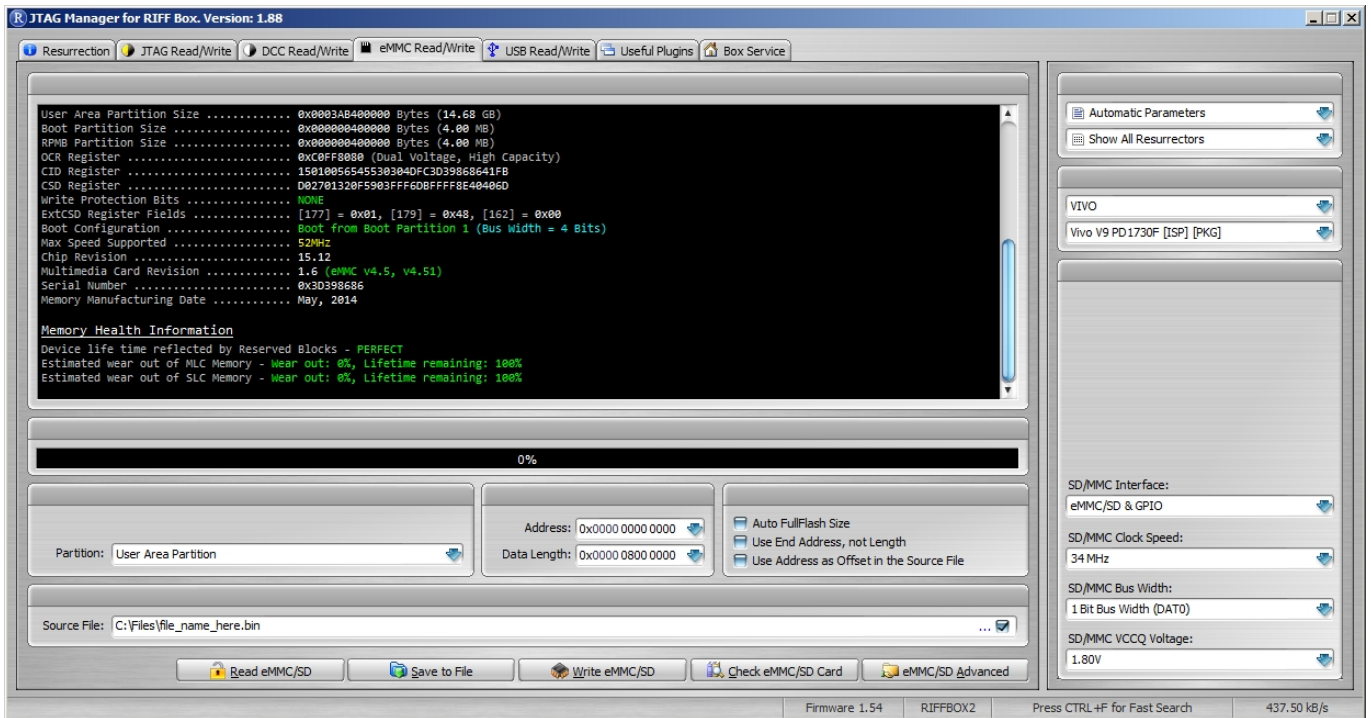
- Start Address
- Data Length

If we want to read specific size, we can use presets (from 1MB to 16GB) or use auto fullflash size option:



# eMMC Read/Write tab

Now we simply click "Read eMMC/SD" and after reading is finished we can save data to a file (Save to file) or hold shift key to use "Show hex data" option:



Unique solution ID: #1075

Author: Legija

Last update: 2020-06-05 14:06