

RIFF JTAG Error codes and troubleshooting

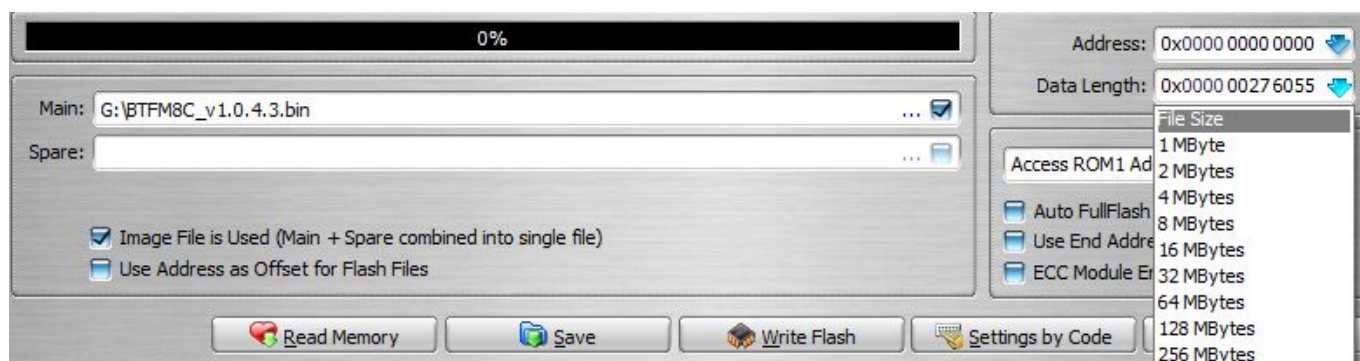
ERROR: Main data file size is less than requested to flash to main

ERROR: Main data file size is less than requested to flash to main

Happens when "Autofullflash size" is used and file selected in main field is less then detected flash chip size.

Solution:

Use "File Size" option in Data Length field instead of auto fullflash size.



Unique solution ID: #1040

Author: Legija

Last update: 2012-04-28 14:18