

JTAG Manager

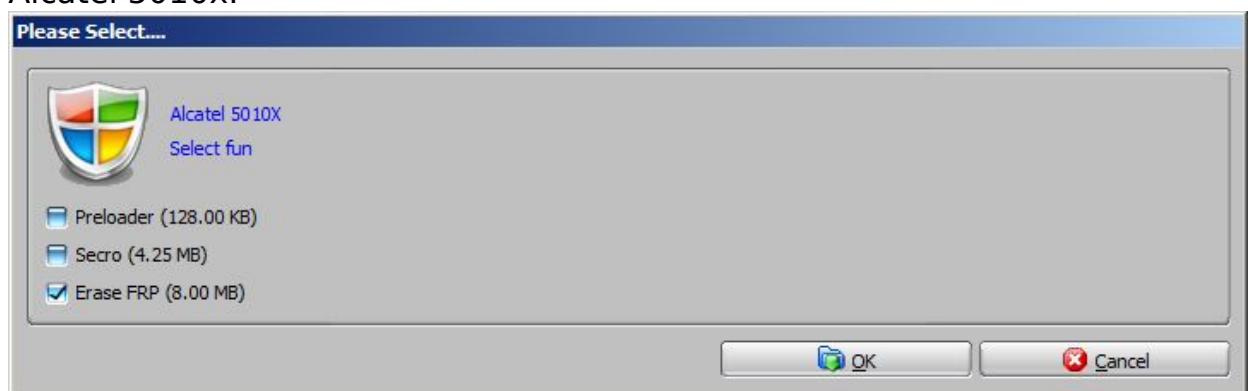
How to erase FRP (Factory Reset Protection) using RIFF Box, generic instructions

Factory Reset Protection (FRP) is a security method that was designed to make sure someone can't just wipe and factory reset your phone if you've lost it or it was stolen.

In cases where data wipe is attempted without deleting Google account first, FRP comes up and requires Google account sign in in order to use the device.

FRP can be disabled by erasing FRP partition content, or restoring factory FRP partition. RIFF Box software supports few methods of FRP erasing:

- Pre-edited repair package,
In this example we can see conditional operations check box dialog, for Alcatel 5010x:



- Manually using eMMC Plugin:

Manual

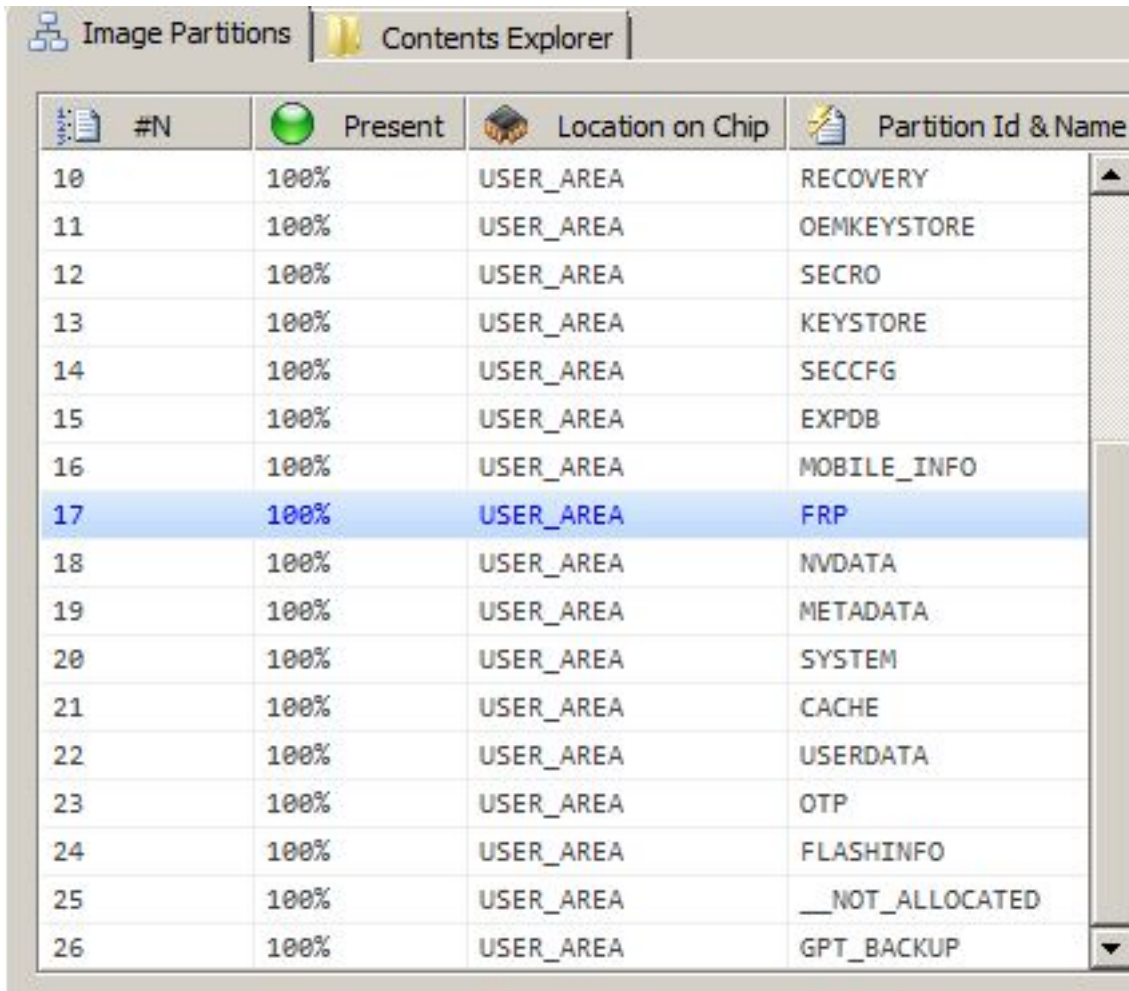
- Erase FRP via ISP/Direct eMMC access
- Erase FRP via MTK USB access
- Erase FRP via Qualcomm USB access.

First, establish connection to chip or device, depending on connection method.

Start eMMC Plugin (Useful Plugins -> eMMC Based Fullflash ...)

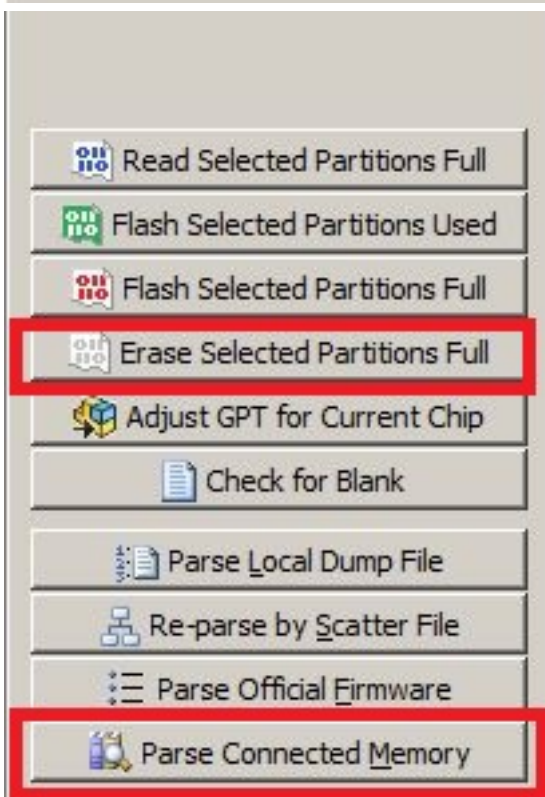
Click "Parse connected memory" and double click "FRP" partition to select it.

JTAG Manager



The screenshot shows the JTAG Manager software interface. At the top, there are two tabs: "Image Partitions" and "Contents Explorer". Below the tabs is a table with the following columns: "#N", "Present", "Location on Chip", and "Partition Id & Name". The table contains 17 rows of data, with the 17th row highlighted in blue. The 17th row has the following values: #N: 17, Present: 100%, Location on Chip: USER_AREA, Partition Id & Name: FRP.

#N	Present	Location on Chip	Partition Id & Name
10	100%	USER_AREA	RECOVERY
11	100%	USER_AREA	OEMKEYSTORE
12	100%	USER_AREA	SECRO
13	100%	USER_AREA	KEYSTORE
14	100%	USER_AREA	SECCFG
15	100%	USER_AREA	EXPDB
16	100%	USER_AREA	MOBILE_INFO
17	100%	USER_AREA	FRP
18	100%	USER_AREA	NVDATA
19	100%	USER_AREA	METADATA
20	100%	USER_AREA	SYSTEM
21	100%	USER_AREA	CACHE
22	100%	USER_AREA	USERDATA
23	100%	USER_AREA	OTP
24	100%	USER_AREA	FLASHINFO
25	100%	USER_AREA	__NOT_ALLOCATED
26	100%	USER_AREA	GPT_BACKUP



Click "Erase selected partition full".

Unique solution ID: #1070

Page 2 / 3

(c) 2019 Legija <> | 2019-05-26 02:51

URL: <http://faq.riffbox.org/content/3/71/en/how-to-erase-frp-factory-reset-protection-using-riff-box-generic-instrucions.html>

JTAG Manager

Author: Legija

Last update: 2019-03-29 16:41